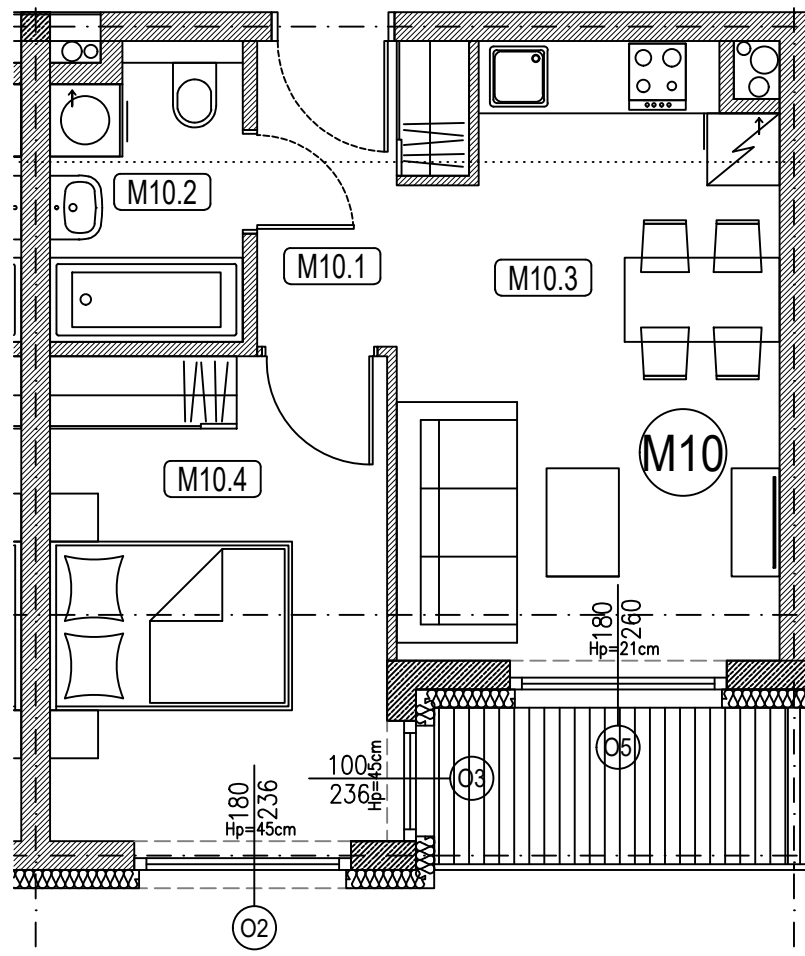
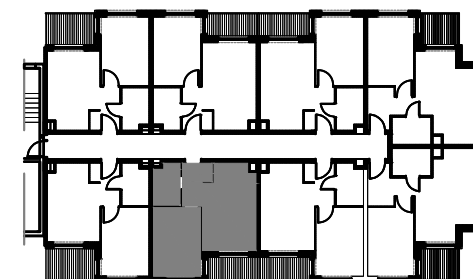


# KARTA MIESZKANIA M10

## II PIĘTRO



| NR POM.         | NR POM. | NAZWA           | POW.(m2) |
|-----------------|---------|-----------------|----------|
| M 10<br>33,28m2 | M10.1   | KORYTARZ        | 3,53     |
|                 | M10.2   | ŁAZIENKA        | 3,66     |
|                 | M10.3   | SALON Z AJKUCH. | 15,01    |
|                 | M10.4   | POKÓJ           | 11,08    |



PUCKI PLAC