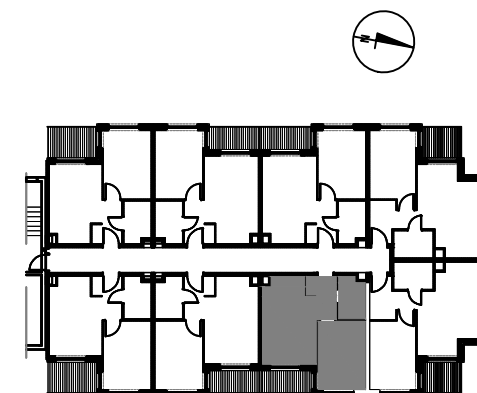
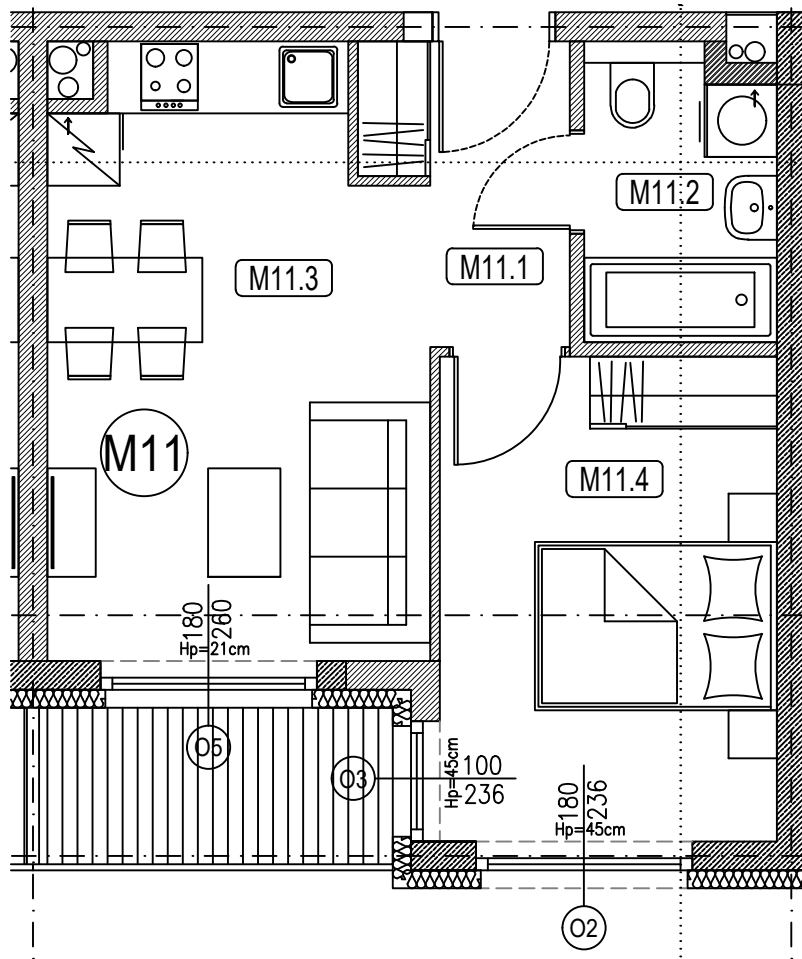


## KARTA MIESZKANIA M11 II PIĘTRO

NR POM.	NR POM.	NAZWA	POW.(m <sup>2</sup> )
M 11 33,28m <sup>2</sup>	M11.1	KORYTARZ	3,53
	M11.2	ŁAZIENKA	3,66
	M11.3	SALON Z AJKUCH.	15,01
	M11.4	POKÓJ	11,08



PUCKI PLAC