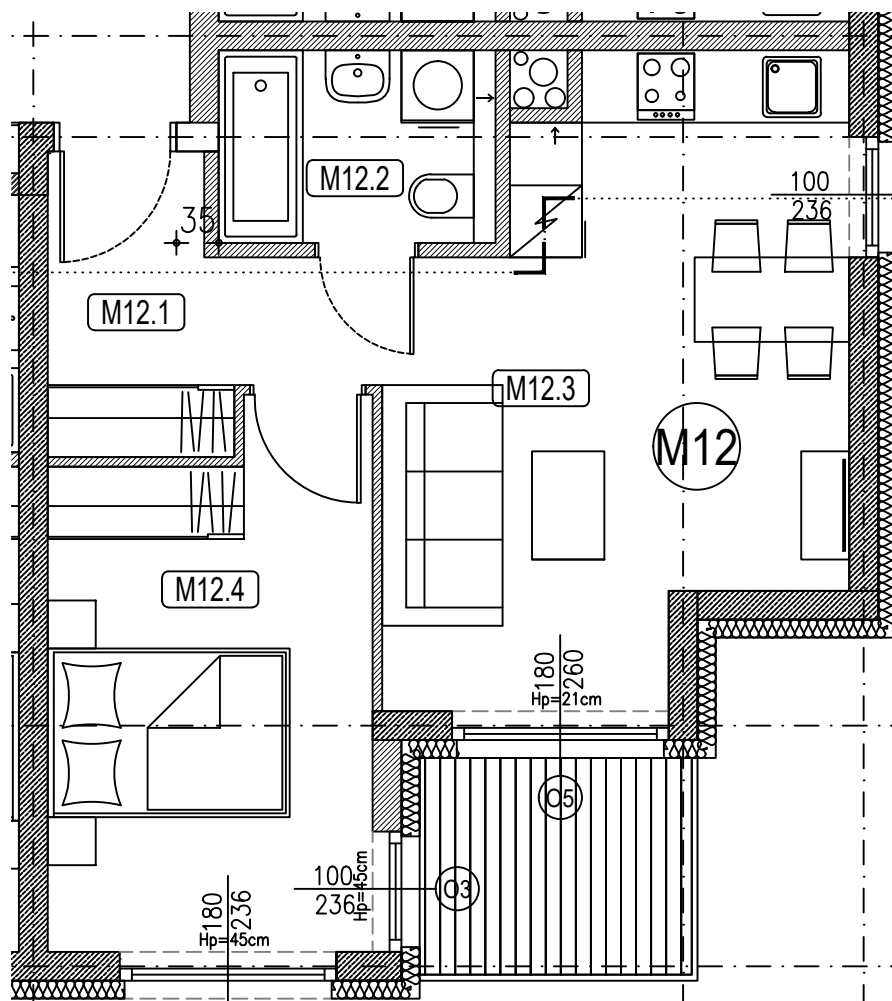
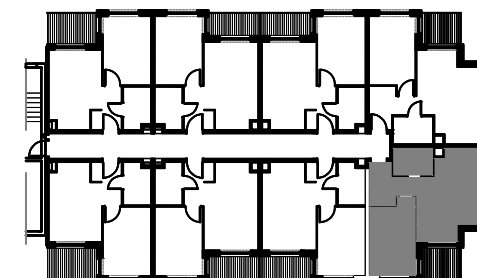


KARTA MIESZKANIA M12

II PIĘTRO



NR POM.	NR POM.	NAZWA	POW.(m2)
M 12 37,09m2	M12.1	KORYTARZ	4,89
	M12.2	ŁAZIENKA	3,56
	M12.3	SALON Z AJKUCH.	17,34
	M12.4	POKÓJ	11,30



PUCKI PLAC