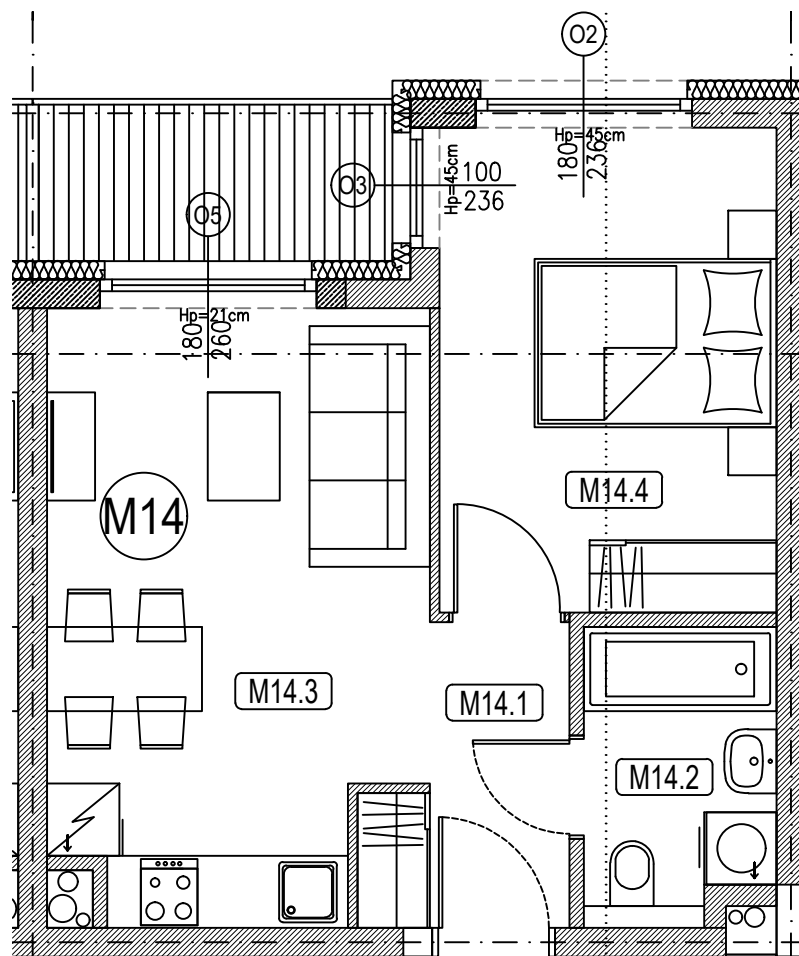
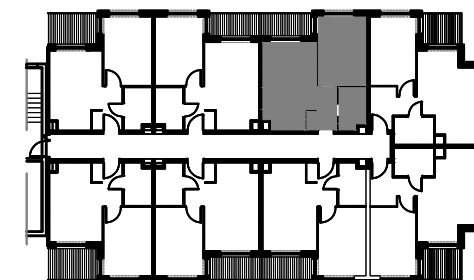


KARTA MIESZKANIA M14

II PIĘTRO



NR POM.	NR POM.	NAZWA	POW.(m2)
M 14 33,28m2	M14.1	KORYTARZ	3,53
	M14.2	ŁAZIENKA	3,66
	M14.3	SALON Z AJUCH.	15,01
	M14.4	POKÓJ	11,08



PUCKI PLAC