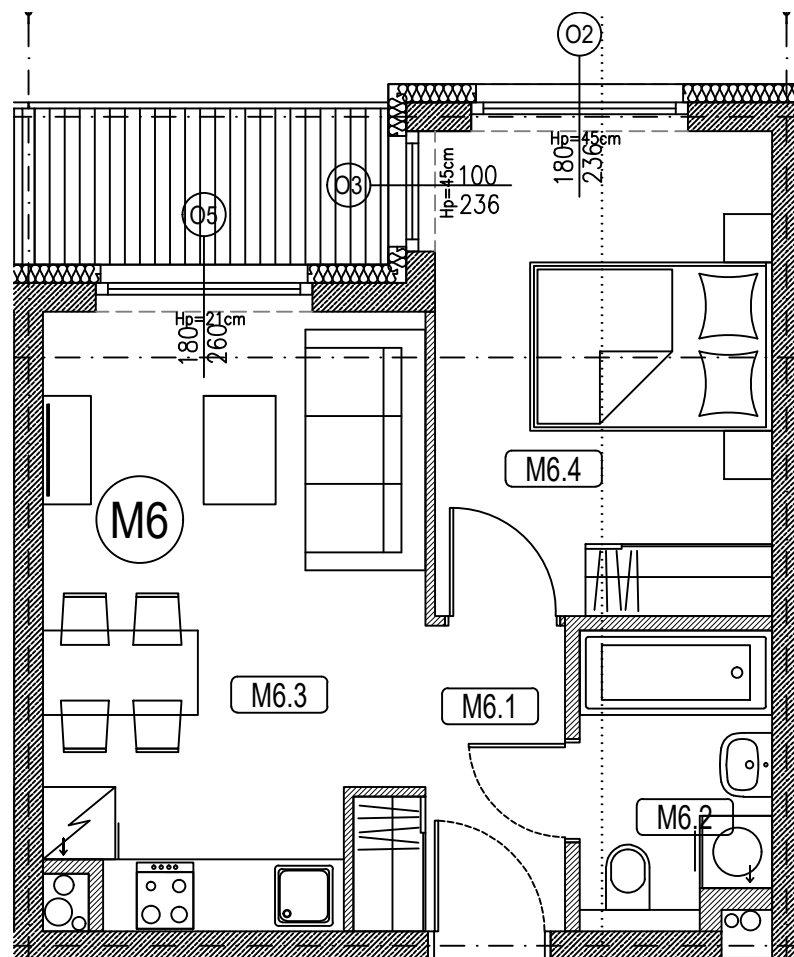
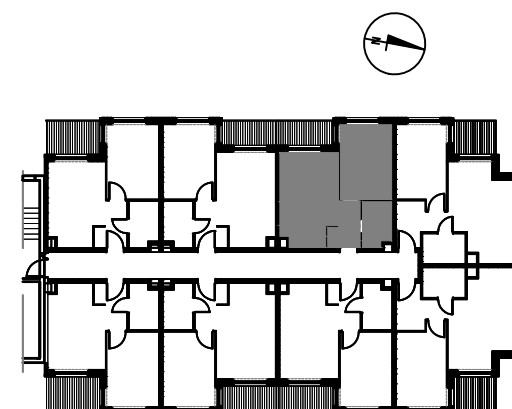


KARTA MIESZKANIA M06 I PIĘTRO



NR POM.	NR POM.	NAZWA	POW.(m2)
M 06 33,28m2	M6.1	KORYTARZ	3,53
	M6.2	ŁAZIENKA	3,66
	M6.3	SALON Z AJKUCH.	15,01
	M6.4	POKÓJ	11,08



PUCKI PLAC